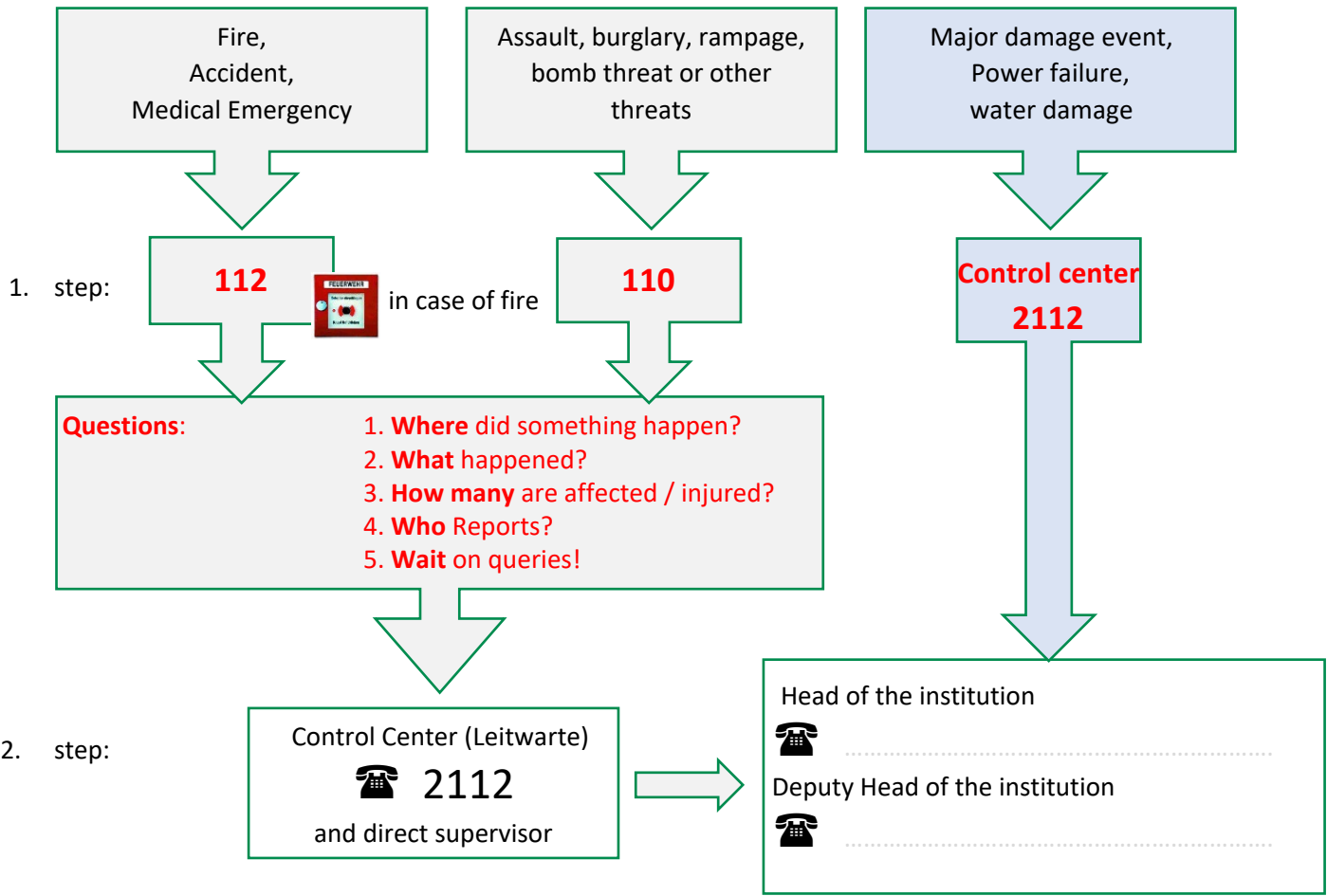


Clausthal University of Technology Alarm Plan

Own location:

Urgent measures: Get help – rescue people – get to safety




3. step: wait for instructions from the police / fire department or the Presidential Board

Important phone numbers	Further information (for your location)
First aider ☎ ☎ ☎	First aid material & First aid book for documentation
Fire protection officer ☎ ☎	next defibrillators
Evacuation Officer ☎ ☎	electrical main switch
Caretaker ☎	main gas tap extinguishing water connection main water connection fire extinguishing
Building manager ☎ Occupational safety ☎ Poison Emergency Center: 0551/19240	<hr/> accident insurance doctor: Dr. med. Mohamed Diab, Windmühlenstraße 1, CLZ ☎ 05323 714-190

What to do in an emergency?

First and foremost: keep calm! Pay attention to your own safety! Call in additional support, get an overview of the situation.

In the event of personal injury, fire, natural disaster / major incident, call the following number:

 **112** without area code,



In case of fire, also activate the fire alarm system
(where available):

Other emergencies such as rampage and threats, bomb threat, kidnapping, extremism, discovery of suspicious objects or substances, hostage-taking:

 **110** without area code

A report should include:

Where did the emergency happen? (address, (building number), room number)

What has happened? Briefly describe the emergency situation! Fire, medical emergency, bomb threat, etc.?

How many people are affected/injured/inside the building? This is important for the rescue coordination center in order to dispatch sufficient rescue resources.

What type of injuries are there? This is important for the rescue coordination center in order to dispatch the right rescue equipment.

Wait for queries! The call is always ended by the rescue coordination center. Stay on the phone for this long!

Afterwards, the **control room (extension: 2112)** and the **direct superior** must be informed as quickly as possible for all alarms. The direct superior should also inform the management of the facility as soon as possible.

Further instructions from the police/fire brigade or the Presidential Board must be awaited.

Translated with DeepL.com (free version)